

Home > 5972311407F

Part Number: **5972311407F**


### General Description

Series	597
Configuration	1208 Package
Description	SMD LED Rt Ang G 7" Reel
Package Options	Tape and Reel
Lamp Type	Single Color
LED Type	GaP
Lens Color	Non-Diffused

### Absolute Maximum Ratings (Ta = 25°)

Reverse Current	100 @ Vr =4V
Forward Current Pulsed	60mA
Derating	from 25°C @ .36mA/°C
Operating Temperature	-30~ +85
Storage Temperature	-40~ +100

### Operating Characteristics

Color	Green 
Luminous Intensity Min	2.6
Luminous Intensity Typical	5.2
Test Current mA	25mA
Power Dissipation Max	70mW



This is a  
RoHS Compliant Product  
To learn more click here

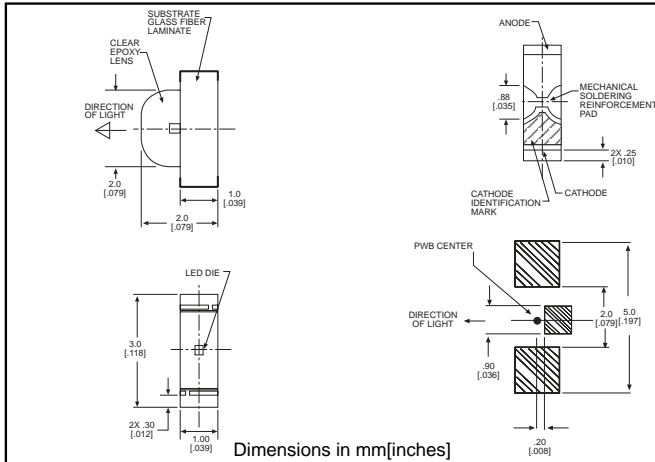


**microLED**®

**Surface Mount LED  
Right Angle Type Package**

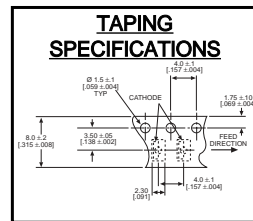
**Dialight**  
**597-2xx1-4xx**

1



**PART NO.\***  
597-2002-4xx  
597-2111-4xx  
597-2201-4xx  
597-2212-4xx  
597-2222-4xx  
597-2311-4xx  
597-2401-4xx

**COLOR**  
Red  
Red  
Orange  
Orange  
Green  
Green  
Yellow



**\*ORDERING INFORMATION**

**597-2xx1-4xx**

packaging option →

02	20 pieces on tape
07	7" reel, 3000 pcs/reel

**Features**

- Compatible with automatic placement equipment
- Compatible with infrared reflow processes
- Packaged on 8mm tape, 7" reels (meets EIA-481-1 standard)
- Helps to eliminate mixed technology PC board processing

<b>ABSOLUTE MAXIMUM RATINGS</b> (T <sub>A</sub> =25°C)	Red <b>-2202</b>	Red <b>-2111</b>	Orange <b>-2201</b>	Orange <b>-2212</b>	Amber <b>-2222</b>	Green <b>-2311</b>	Yellow <b>-2401</b>
Power Dissipation (mW)	81	57.5	70	81	81	70	70
Forward Current (mA)	25	25	25	25	25	25	25
Derating (mA/C°) Above 25°C	.43	.36	.36	.43	.43	.36	.36
Peak Current (mA)	30	60	60	30	30	60	60
Pulse width = 100 μs	100*			100	100		
Operating Temperature (°C)	-40/+85	-30/+85	-30/+85	-40/+85	-40/+85	-30/+85	-30/+85
Storage Temperature (°C)	-40/+100	-40/+100	-40/+100	-40/+100	-40/+100	-40/+100	-40/+100
Soldering Temperature	260°C, 5 seconds max						

Solder Adherence per MIL-STD-202E, Method 208C

<b>OPERATING CHARACTERISTICS</b> (T <sub>A</sub> =25°C)		Red <b>-2202</b>	Red <b>-2111</b>	Orange <b>-2201</b>	Orange <b>-2212</b>	Amber <b>-2222</b>	Green <b>-2311</b>	Yellow <b>-2401</b>
Luminous Intensity (mcd)	Min.	16	6.2	1.5	16	16	2.6	1.5
	Typical	50	12.4	3	65	65	5.2	3
Peak Wavelength (nm)	Typical	630	660	605	609	592	560	580
λ Peak								
Viewing Angle (2θ 1/2)	Typical	130°	130°	130°	130°	130°	130°	130°
Forward Voltage (V)	Typical	1.9	1.7	2.2	1.9	1.9	2.1	2.2
	Max.	2.4	2.3	2.8	2.4	2.4	2.8	2.8
Reverse Current (μA)	Max	100*	100	100	100	100*	100	100
(V <sub>R</sub> = 4V) * (V <sub>R</sub> = 5V)								

θ 1/2 is the off axis angle at which the luminous intensity is half the axial luminous intensity